



 **GOLDEN HALL** **XPLORER**<sup>®</sup>

**Educational Kit**



## Contents

1. Welcome to XPLORE
2. Thematic Zones
3. Organize your school visit
4. Play and Learn with safety
5. Visit XPLORE

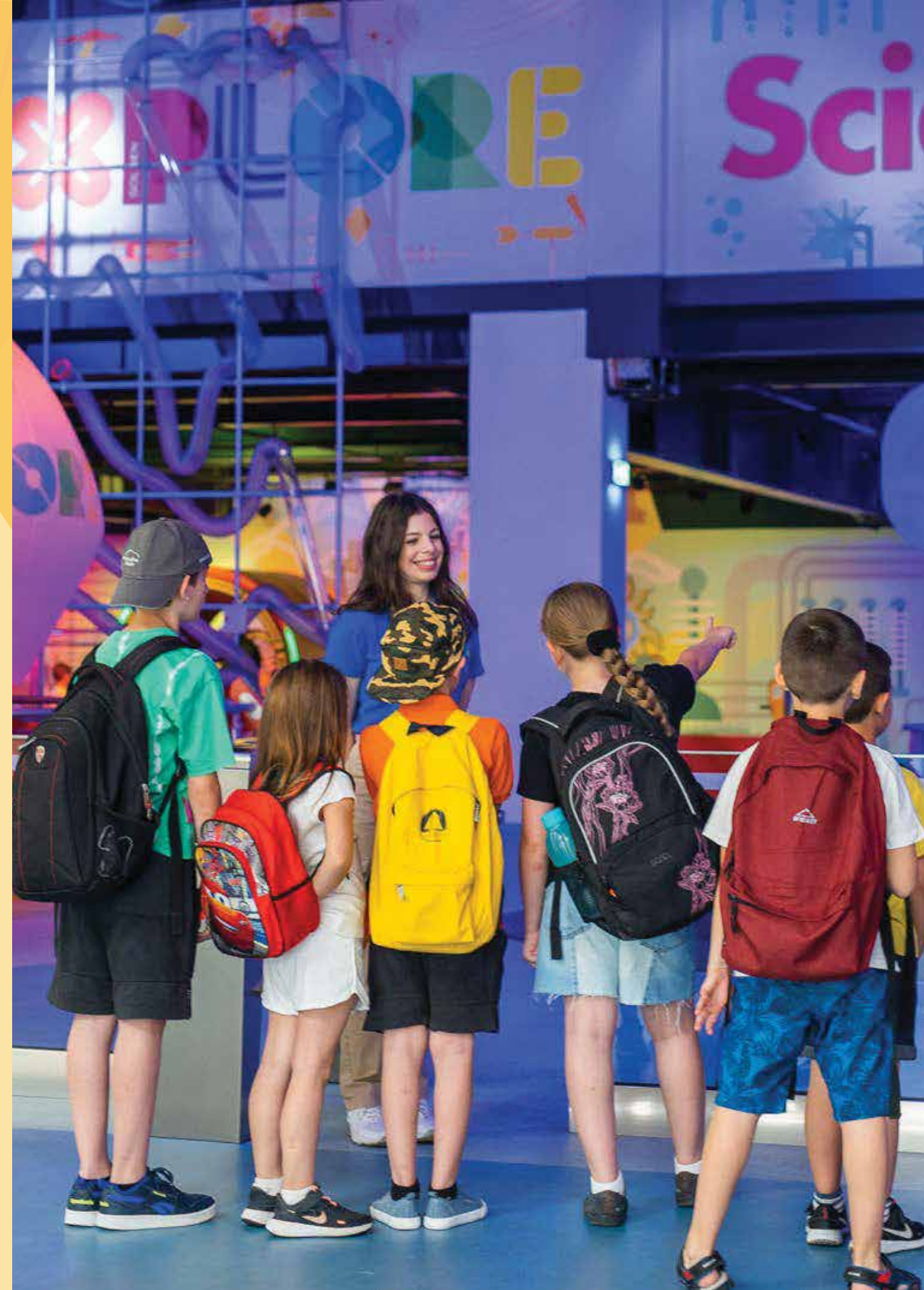
# 1. Welcome to XPLORE

XPLORE is an ideal area of entertainment and education, created to offer the joy of learning and knowledge in the most fascinating way!

The interactive exhibits of its three thematic zones, Science, Adventure and Oceans, encourage experiential and active learning, through activities of inquiry and discovery, problem solving, collaboration and free play, in a safe and modern environment.

At the 4,500 sq.m. of XPLORE, you will learn all about the human body, dinosaurs, engineering, natural phenomena and superheroes, while discovering a modern TV studio and an aquarium with 140 species of fish!

Based on XPLORE's thematic zones, the educational tour "**Learn More, Play More**" was created.



## 2. Educational Themes

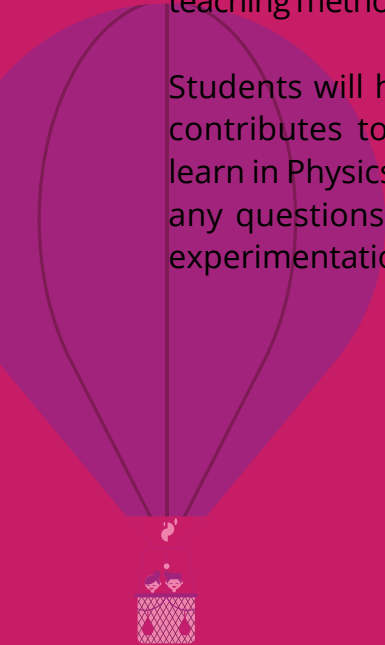
### XPLORE Science

In XPLORE Science, children will learn basic scientific principles, through experiential play.

Through interactive exhibits, students will have the chance to learn how the parts of the human body function, how energy, sound, power and light are produced, feel the air pressure, understand the concepts of mechanics and play with the main component of life: water.

The thematic zone XPLORE Science promotes the STEM teaching method in an entertaining and safe environment.

Students will have the chance to see how technology contributes to our lives, to practice everything they learn in Physics, to be alert to give their own solutions to any questions and to understand the world through experimentation.



Παχύ έντερο  
Large  
intestine



## The Human Body

In the Body section, students explore our fascinating world by analyzing the daily processes of the human body, discover their skeleton and observe the digestion process, which gives us energy.

## Light!

Using light, inventions such as the cinema, the laser and the kaleidoscope, but also concepts like perspective are born. At the same time, through our own vision and with the help of technology, we can use the spectrum of light in new ways.

In the Light section, children will learn new, exciting information, paint in the air and discover how magic mirrors “work”!



## Electricity

Do you have enough energy to light the lamps of XPLORE? We challenge you to solve the electrical circuits and discover the power of lightning.

Students interact with exhibits that run on their own kinetic energy, create lightning and discover how their knowledge of electrical circuits is put into practice.

By experimenting with electricity, conductance and the ability to transmit energy, they learn even more!

## Water

Unlock the potential of the liquid element! Water is so powerful that it can move the whole world and so simple that it can create a giant soap bubble.

The interactive table of water encourages experimentation with past and present inventions and the understanding of the natural and man-made phenomena caused by water.

Students are introduced to the concepts of vortex, pressure and water transport through makeshift tunnels, Archimedes' screw and Bernoulli's principle.



## Sound

Are you ready to play the piano with your feet? What are the secrets of sound? How does sound travel and what shape would it have if we could see it?

The gigantic musical instruments give "ground" to the sense of sound, the cannon sound reaches its target, and a whisper is heard at full blast.

In this section, students will learn how sound is transmitted and how it finally reaches us, through their senses.

## Air

How do helicopters fly? How does a hot-air balloon take off? What potential does the air have? How does its pressure work, combined with heat and gravity?

From the strength of a hurricane to man's ability to fly, XPLORE's Air area offers a lot of knowledge. Students attempt to launch a propeller, a hot-air balloon, and even make an object levitate.



## Mechanics

How does a machine work? How did they manage to lift big masses in ancient times? Discover the mechanisms that led to today's machines.

The lever and the cogwheels show us the internal function of machines, but also the origin of the most complex inventions.

Here, students will understand machines' internal connections and their important role in the creation of today's world.



## **XPLORE Oceans**

XPLORE Oceans, Athens' first aquarium, offers a unique experience of the oceans' endless world. More than 2,000 fish from 140 different species are waiting to be discovered, in 20 impressive tanks.





XPLORE Oceans team believes that the best way to inform and educate our children about the miracle, beauty and greatness of oceans is by creating enriched experiences which go beyond any information they can find online, at home or in a book. In this way, they become more sensitive in understanding and protecting the ocean and sea-life, for the future generations.

Because as Jacques Yves Cousteau, one of the founders of oceanography and marine protection, stated, "**People protect what they love**".

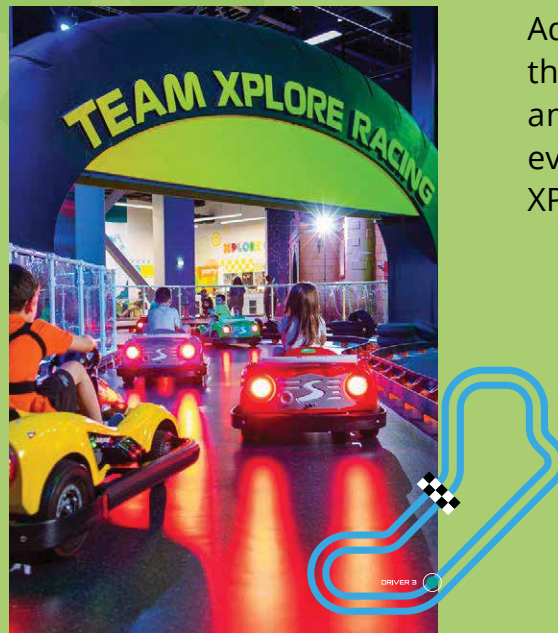


## XPLORE Adventure

In this thematic zone, we emphasize on learning through imaginative play, which encourages children to try different activities and “live” in different environments, both real and imaginary.



All the above, are offered in a safe 1,190 sq.m. area, appropriate for activities related to the students’ emotional empowerment both individually and collectively, always under the guidance of their teachers.



Through the 6 different themed sections of XPLORE Adventure, kids can drive on a go-kart racetrack and develop their reflexes and learn about safe driving, become the news anchor of a news program on TV, explore and learn everything about dinosaurs and become the next architects of XPLORE’s virtual city!

ance



## What We Offer

- Tour by XPLORE's experienced and well-trained personnel, present throughout your visit.
- Possibility of choosing one or more educational zones.
- Specially designed activities that promote experiential and active learning.
- Souvenir shopping from the XPLORE Shop with a 15% discount.
- Available area for lunch in XPLORE Café.

## 3. Organizing your School visit

### Arrival Area

The parking area for school buses is in the Grey section of Golden Hall's parking area (entrance from Spirou Loui & Pittara str.). Please note that students can disembark in this area, but school buses are not allowed to remain in the parking area.

### Arrival Time

For your convenience, we recommend for school visits to be scheduled from Monday to Friday, between 10:00-17:00.

Please ensure you arrive within the arranged timeslot, as XPLORE can get very busy.

A delayed arrival may result in postponement or cancellation of your visit.

Please inform us as soon as possible in case of any changes.

Indicative durations per thematic zone:

**Science: 45 minutes**

**Oceans: 45 minutes**

**Adventure: 45 minutes**

There is the possibility of adjusting the tour and duration of your visit.

### Purchasing Tickets

The payment of your visit must be made on the day of the visit, in cash or with a credit card. As the total charge is based on the exact number of visitors, the final number of students and escorts should be declared two days before the visit. This number will be considered binding.

Issued invoices will be handed to the School's Administration or to the designated school trip leader, on the day of the visit.

## 4. Play & Learn with Safety

### Safety of the Area

The entire XPLORE area, as well as all individual exhibits, are certified by TUV Hellas (Certificate Number: 0877860/7804072/2024/ΠΕ).

### Food Consumption

Food consumption is allowed only in the XPLORE Café.

### Personal Belongings

Storage space is provided for students and chaperones' personal belongings.

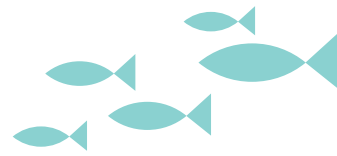
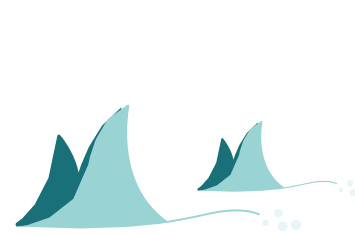
We recommend students bring along only items necessary for their visit.

### In Case of Accident

Please note that you are responsible for your team. In addition, a qualified first aider is on site to provide first aid and address any emergencies, as safety is our top priority. We would appreciate it if you could inform us of any accident or potential danger during your visit. This information is valuable for the safety improvement of XPLORE area.



# XPLORE Operational Rules



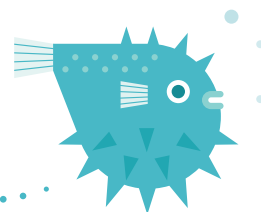
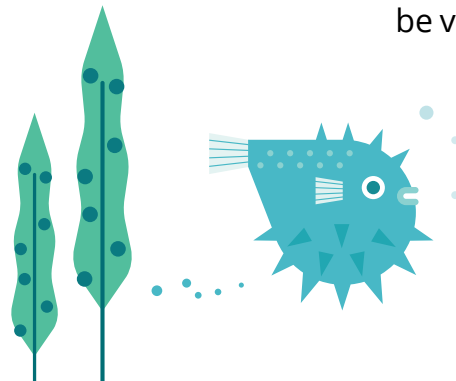
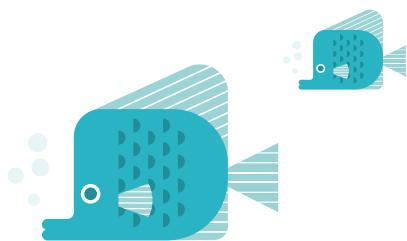
Here you can find XPLORE's key operational rules in summary. Please find the detailed version on XPLORE's website. ([XPLORE Rules of Operation](#)).

- Please schedule your arrival within the arranged time frame and organize student teams outside the XPLORE area, to avoid overcrowding.
- The teacher in charge is responsible for the students' behavior and must ensure there are enough chaperones.
- The supervising teacher is responsible for the constant supervision and monitoring of students, as well as students' compliance with all rules and regulations.
- XPLORE staff can bring attention to certain health and safety regulations, which must be strictly respected and followed by students.

- In certain play areas of XPLORE, there might be some special effects (such as sudden and loud sounds and stroboscopic lighting). It is recommended for students with cardiac disease or other medical issues to ask XPLORE personnel for more details, in order to avoid areas where such special effects are used.
- Please do not knock on the glass tanks, do not use flash photography and do not feed the fish during your visit at the aquarium.

## Useful Information

- XPLORE is always open to the general public, therefore please bear in mind that other visitors may be in the same area during your visit.
- Our priority is the welfare of the aquarium's marine species. Thus, we cannot guarantee that they will always be visible.



## 5. Visit XPLORE



### Contact:

For further information and reservations, please contact us via:

- the [online form](#)
- our e-mail [schools@x-plore.gr](mailto:schools@x-plore.gr)
- our call center 210 6885 454

### Opening Hours:

Monday - Sunday: 10:00 - 21:00



A place of Entertainment, Education  
and Imagination, for all!

**Thank you!**