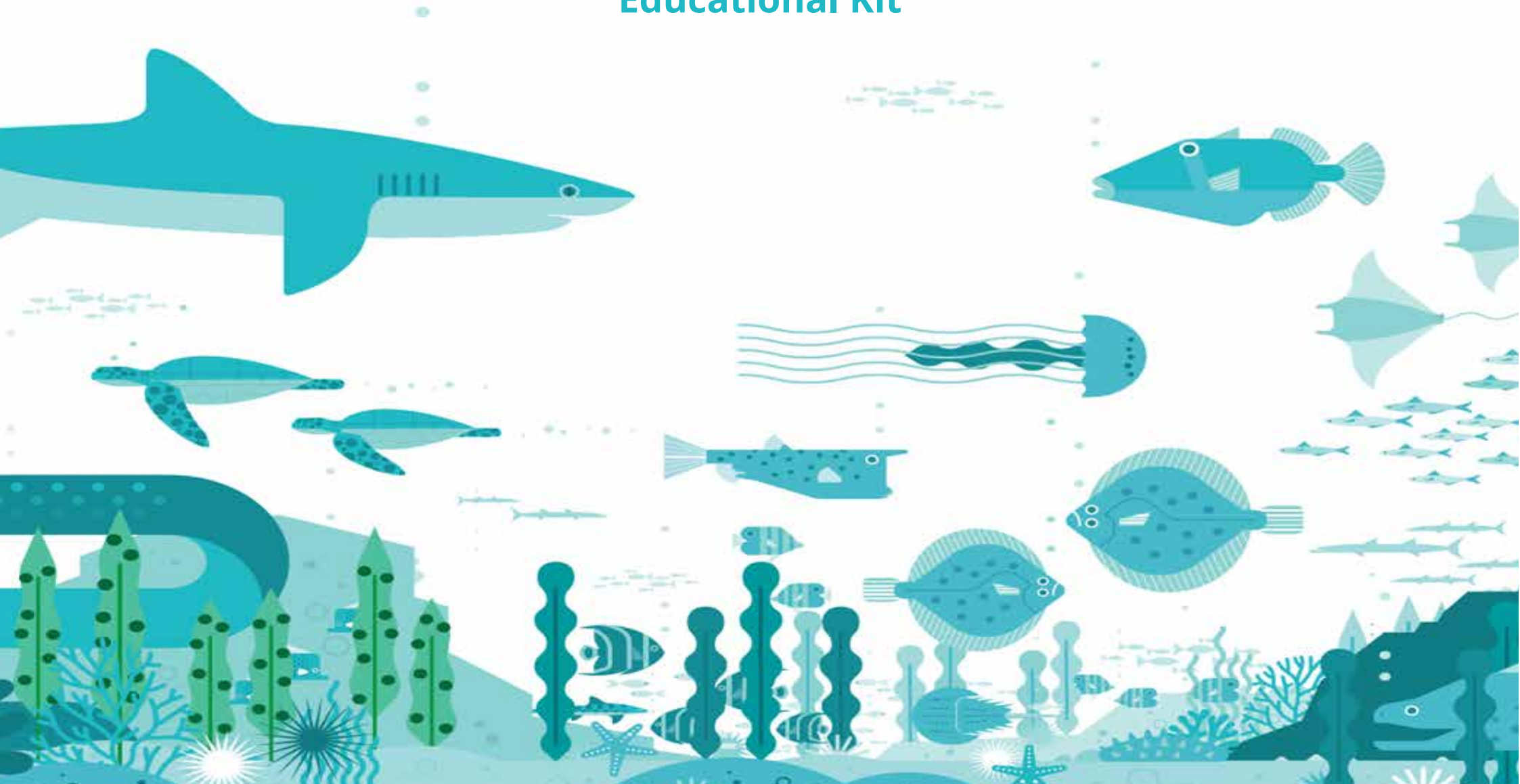




# Oceans

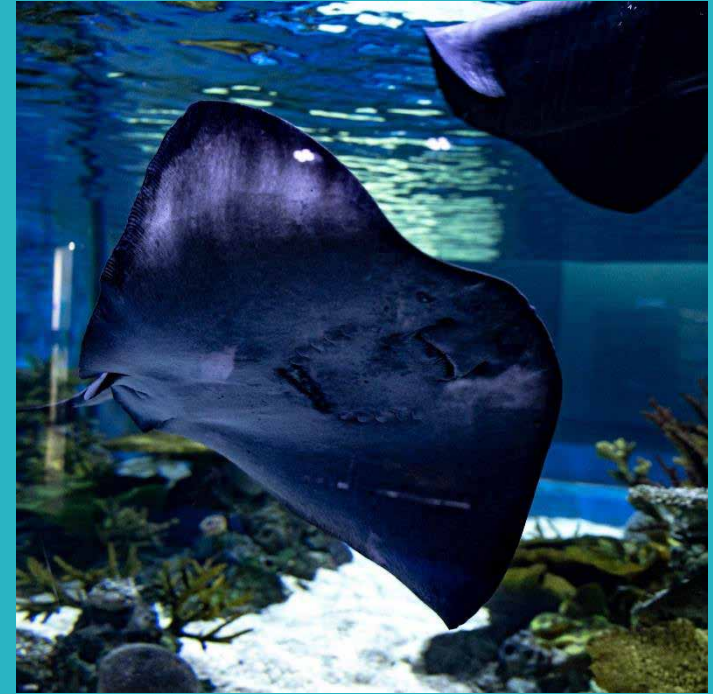
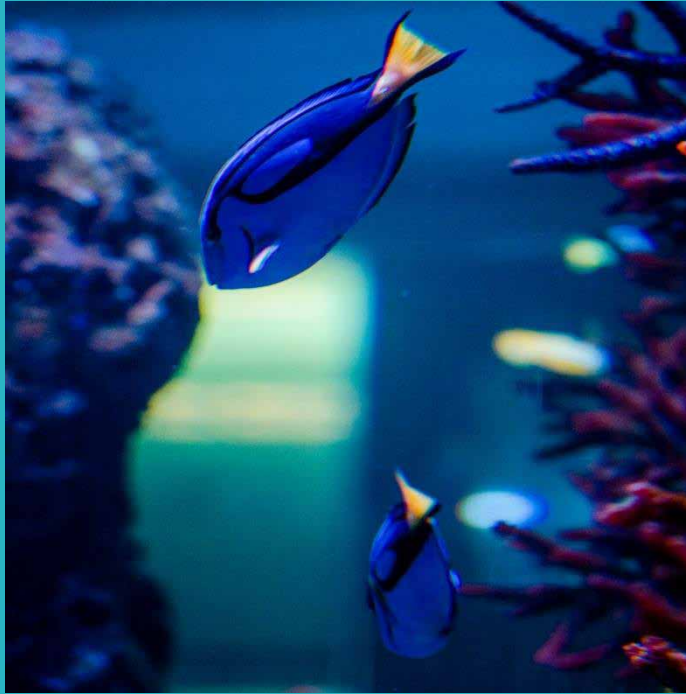
## Educational Kit





## Contents

1. The Aquarium
2. E-XPLORE Oceans Educational Tour
3. Plan your school visit
4. Play and Learn with safety
5. Visit XPLORE



## 1. The Aquarium:

XPLORE Oceans, the only aquarium in Athens, offers a unique underwater experience straight from the depths of the endless marine world. In an area of 500sq.m. you can see up close and learn about 140 different marine life species.

The majority of the 20 fish tanks in the aquarium host tropical coral reefs with temperatures between 20-26°C, while cold water tanks resemble the conditions of deep blue waters located under the oceanic line. Every fish tank combines different habitats to recreate the appropriate ecosystem structure of marine species.

In order to help students better understand the marine world, we created the educational tour **"E-XPLORE Oceans"**, addressed to students of middle school and high school.



## 2. The Educational Tour:

The E-XPLORE educational tour includes the following thematic sections:

- **Marine ecosystems**

Introduction to different marine ecosystems, their characteristics and the living organisms they host. Focus is given on the diversity of life inside an underwater environment and all its different habitats, like coral reefs, mangrove swamps, deep cold waters, lakes and Mediterranean waters.

- **Marine organisms**

Detailed presentation of the marine species hosted in the aquarium, their distinctive characteristics, behaviors and detailed illustration of their original habitat.

- **Human and sea**

Our goal is to foster ecological thinking and marine conservation through learning about the impact of human activities on the environment.

- **Aquarium welfare**

Introduction to the process of feeding and caring for marine organisms with an initial insight into the professions of ichthyologists and marine biologists.

# Educational Tour Objectives

Our team, consisting of world-renowned experts in the fields of marine biology and ecology, has created an aquarium experience aiming to:

- **explore** the fascinating underwater world and the species that live in it.
- **raise awareness and educate** about our planet's marine life, using modern and interactive ways to promote education through entertainment.
- highlight the **interdependent relationship between humans and the marine ecosystem**, by raising concerns regarding the protection and sustainable management of the marine ecosystem.

The tour was designed according to the school curriculum, aiming to enhance the learning procedure through repetition and enrichment of the material already taught in school classrooms. During the tour, students will have the opportunity to immerse themselves in the subject of Environmental Protection, become informed and sensitized, while expanding their knowledge through questions and examples applied to their daily lives.

The tour varies depending on the age group of students, while it can also be modified according to the requirements of the school unit. Tours are conducted in English or Greek.



Our mission at the XPLORE Oceans aquarium is to offer to children the opportunity to learn about the wonder, beauty and importance of oceans through an enriched experience, going beyond the information found in books or online.

With this method, children will better understand and protect the oceans and marine life for future generations.

Because, as stated by Jacques-Yves Cousteau, one of the founders of oceanography and marine conservation:

**“People protect what they love”**

Ωκεανούς



Remember the date!



The ocean is in trouble. It's not all bad news. The good news is that you can do something to help.

- GO AND SEE
- LOOK BUT DON'T TOUCH
- SPREAD THE WORD
- RECYCLE

→ PLANT A TREE

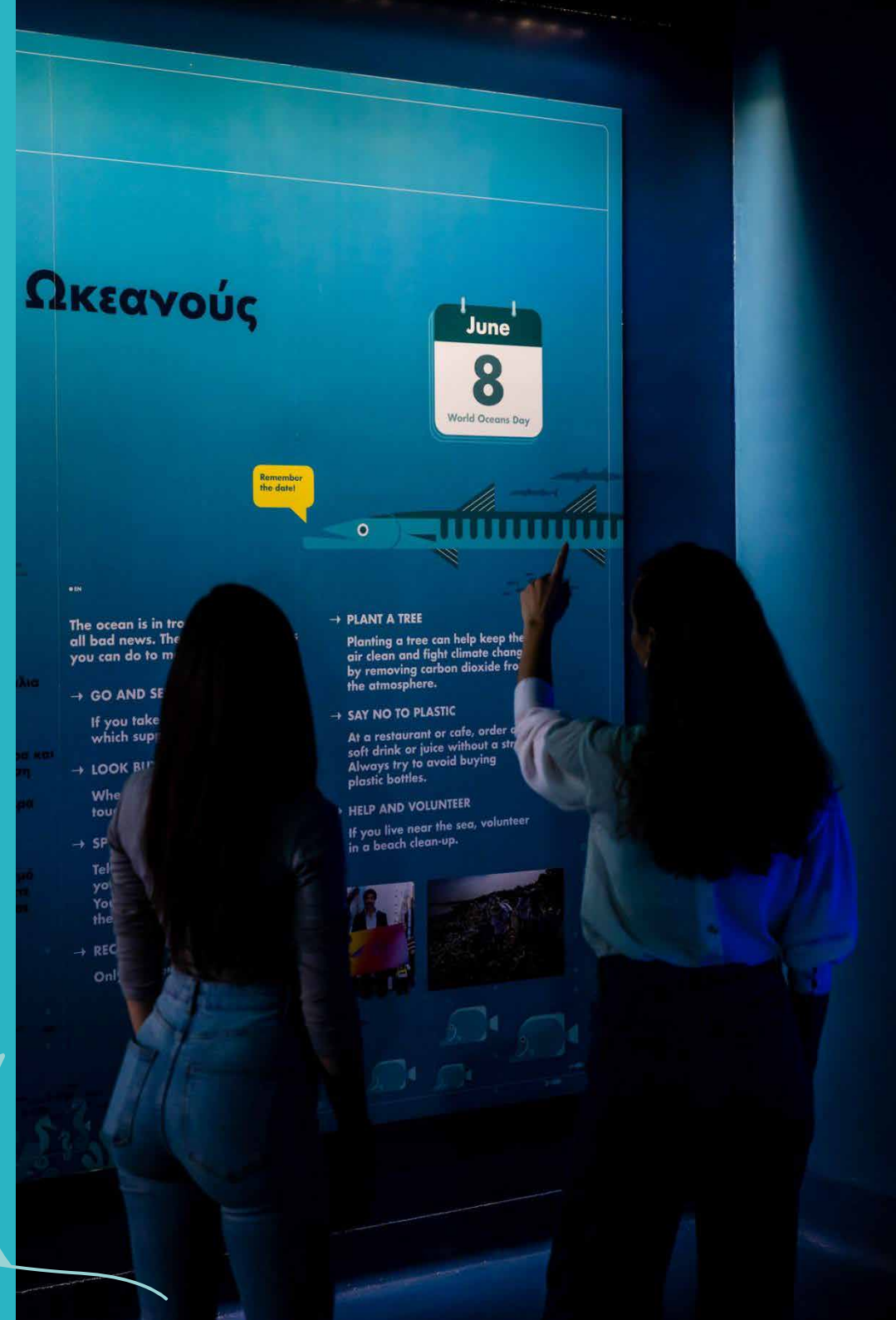
Planting a tree can help keep the air clean and fight climate change by removing carbon dioxide from the atmosphere.

→ SAY NO TO PLASTIC

At a restaurant or cafe, order a soft drink or juice without a straw. Always try to avoid buying plastic bottles.

→ HELP AND VOLUNTEER

If you live near the sea, volunteer in a beach clean-up.



## 3. Plan your school visit

### Arrival Area

The parking area for school buses is in the Grey section of Golden Hall's parking area (entrance from Spirou Loui & Pittara str.). Please note that students can disembark in this area, but school buses are not allowed to remain in the parking area.

### Arrival Time

For your convenience, we recommend for school visits to be scheduled from Monday to Friday, between 10:00-17:00.

Please ensure you arrive within the arranged timeslot, as XPLORE can get very busy.

A delayed arrival may result in postponement or cancellation of your visit.

Please inform us as soon as possible in case of any changes.

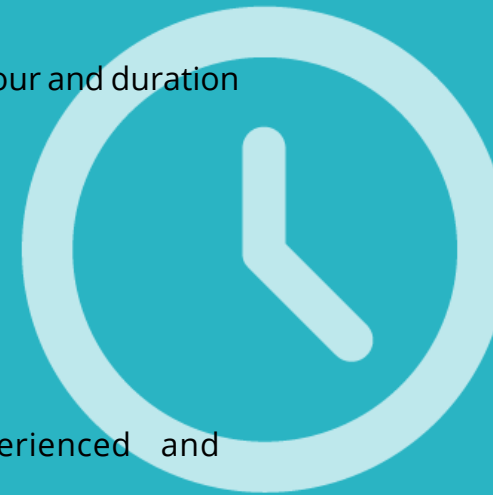
### Induction Time

Approximately 45 minutes.

There is the possibility of adjusting the tour and duration of your visit.

### What we offer

- Guided tour by XPLORE's experienced and well-trained staff.
- Specially designed activities that promote experiential and active learning.



## 4. Play & Learn with Safety

### Safety of the Area

The entire XPLORE area, as well as all individual exhibits, are certified by TUV Hellas  
Certificate Number: 0877860/7804072/2024/ΠΕ).

### Food consumption in the area

Food consumption is allowed only in the XPLORE Café.

### Personal Belongings

Storage space is provided for students and chaperones' personal belongings.

We recommend students bring along only items necessary for their visit.

### In Case of Accident

Please note that you are responsible for your group. In addition, a qualified first aider is on site to provide first aid and address any emergencies, as safety is our top priority.

We would appreciate it if you could inform us of any accident or potential danger during your visit. This information is valuable for the safety improvement of the XPLORE area.





# XPLORE Operational Rules

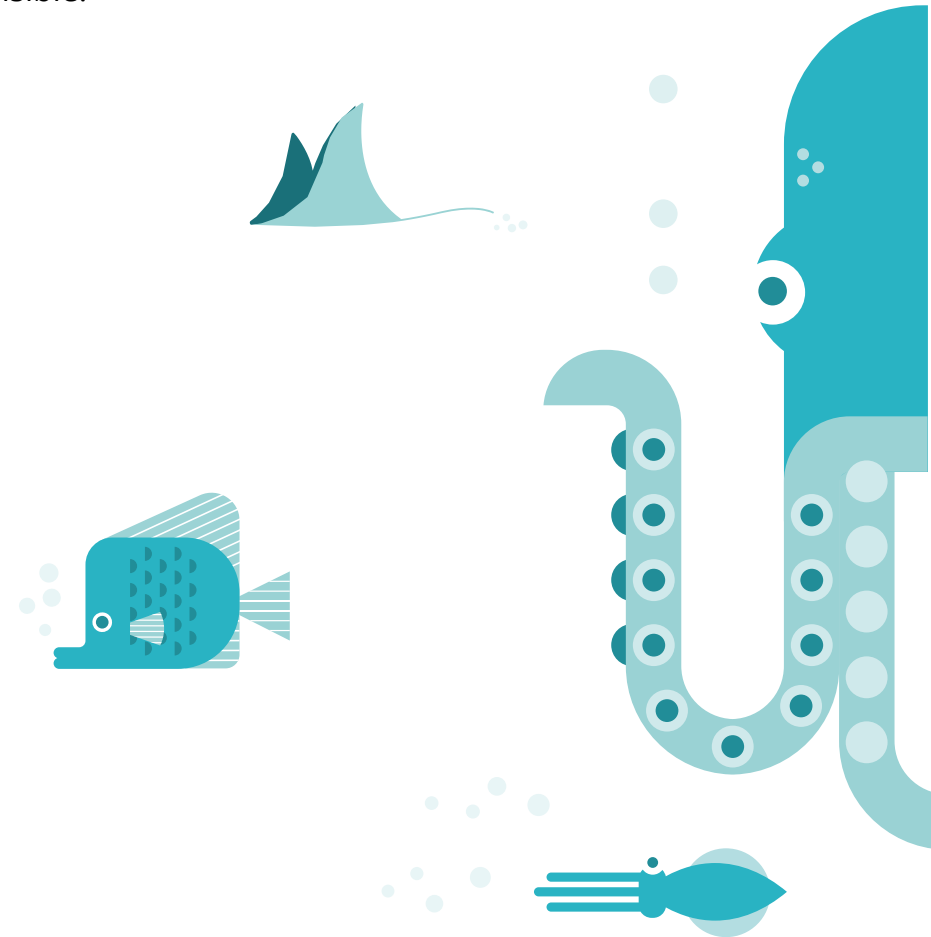
Here you can find XPLORE's key operational rules in summary:

- Please schedule your arrival within the arranged time frame and organize student teams outside the XPLORE area, to avoid overcrowding.
- The teacher in charge is responsible for the students' behavior and must ensure there are enough chaperones.
- The supervising teacher is responsible for the constant supervision and monitoring of students, as well as students' compliance with all rules and regulations.
- XPLORE staff can bring attention to certain health and safety regulations, which must be strictly respected and followed by students.
- Please do not knock on the glass tanks, do not use flash photography and do not feed the fish during your visit to the aquarium.

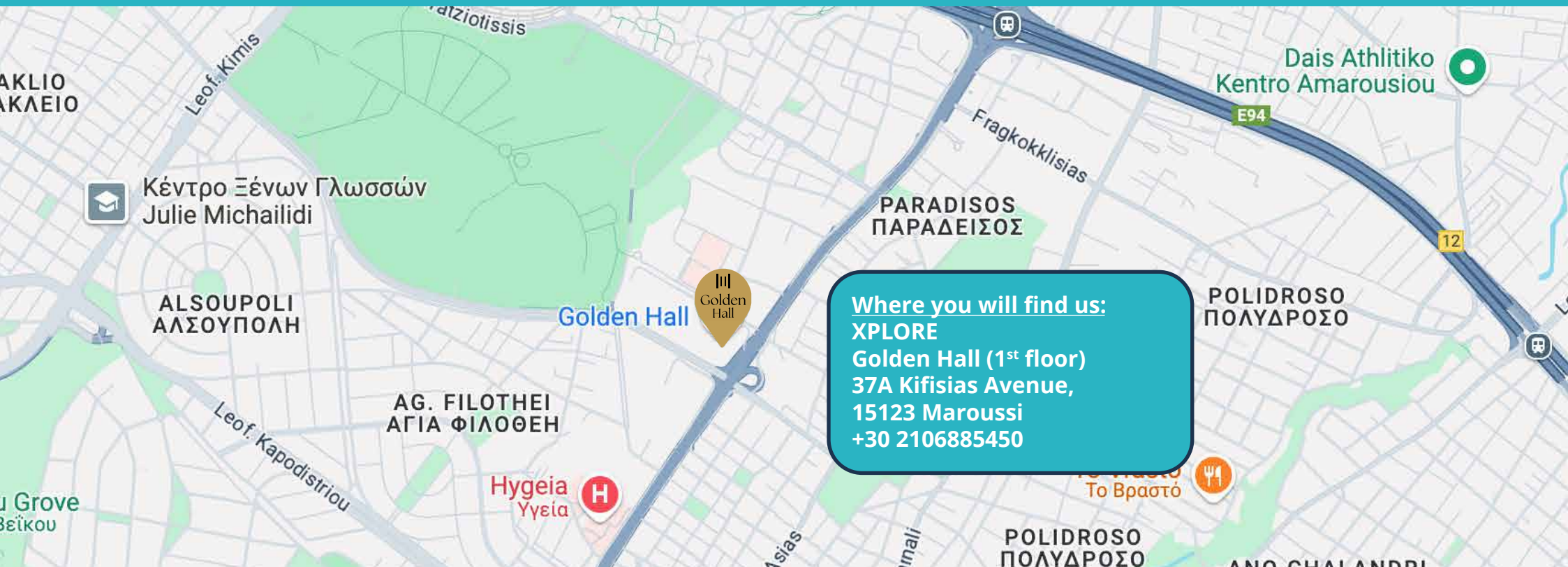
Please find the detailed version on XPLORE's website.  
([XPLORE Rules of Operation](#)).

## Useful Information

- XPLORE is always open to the general public, therefore please bear in mind that other visitors may be in the same area during your visit.
- Our priority is the welfare of the aquarium's marine species. Thus, we cannot guarantee that they will always be visible.



## 5. Visit XPLORE



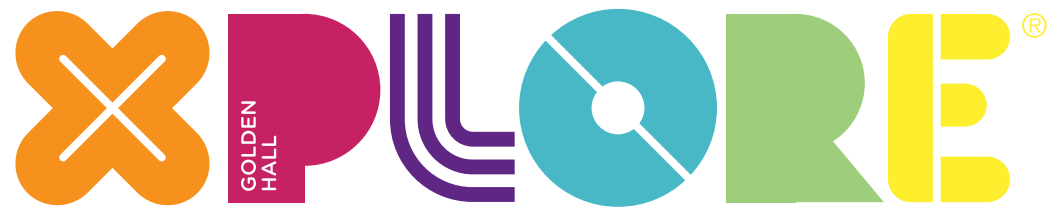
### Contact:

For further information and reservations, please contact us via:

- the [online form](#)
- our e-mail [schools@x-plore.gr](mailto:schools@x-plore.gr)
- our call center 210 6885 454

### Opening Hours:

Monday - Sunday: 10:00 - 21:00



A place of Entertainment, Education  
and Imagination, for all!

**Thank you!**